



seeing beyond™

BUSINESS INTELLIGENCE
SOLUTIONS THAT INSPIRE

Auditing on the XI Platform

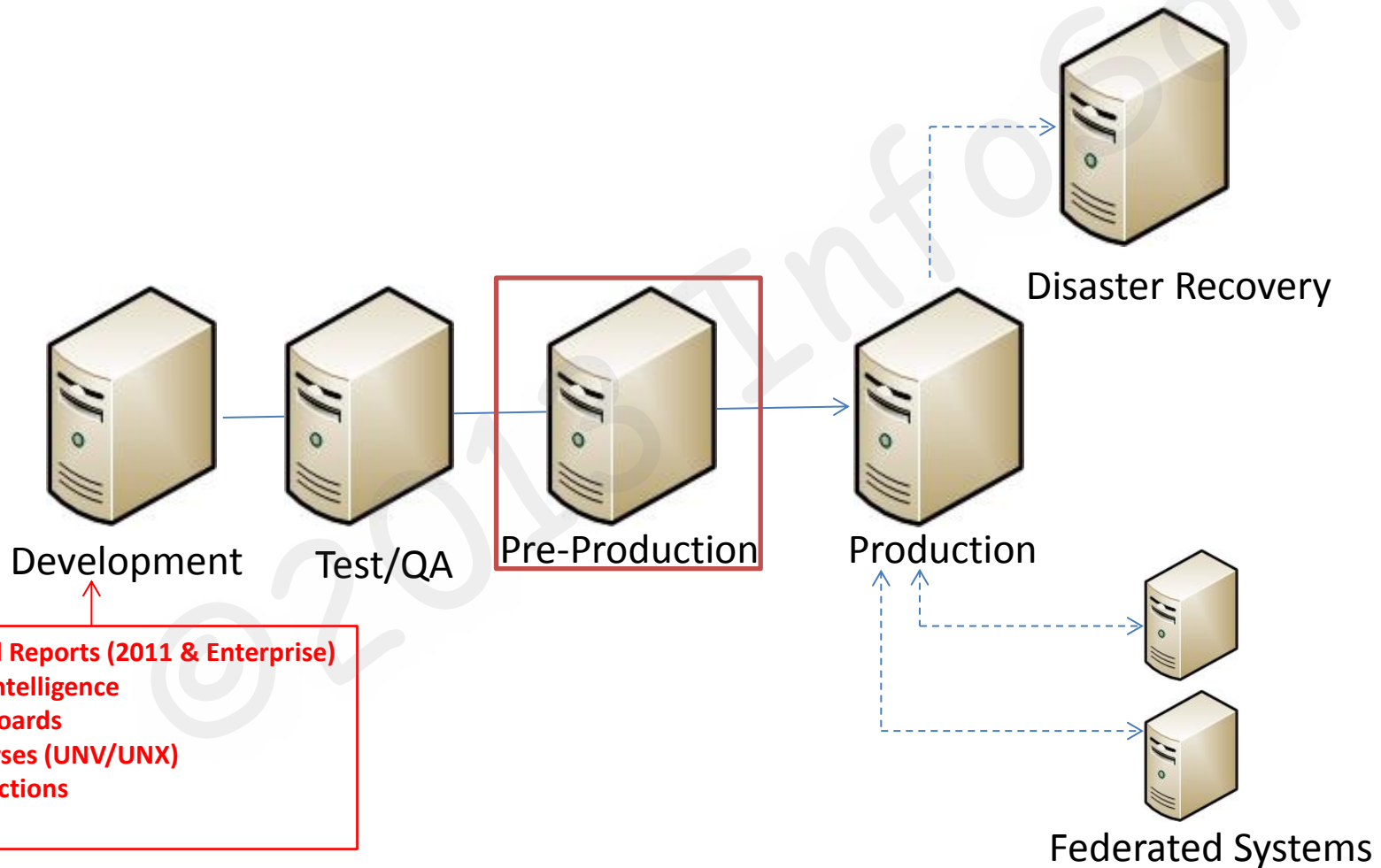
Evan Davies

November, 2011

Lifecycle Management

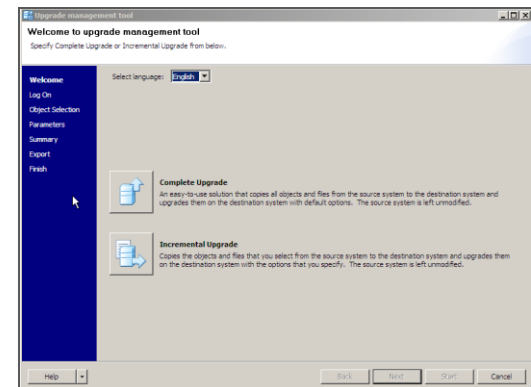
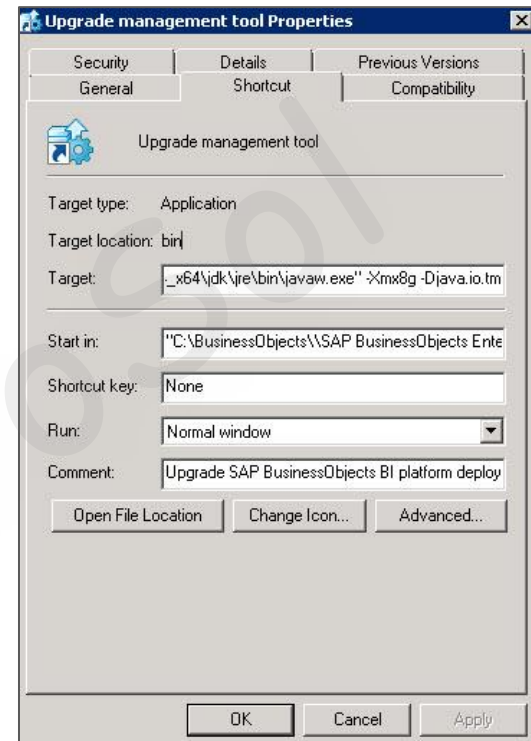
- Review BI 4.0 Environments
- Upgrade Manager
- Life Cycle Manager
 - Promote Content
 - Manage Object Versions
 - Visual Difference
- Life Cycle Manager Deployment
 - Dedicated APS Servers
 - Clustered Configuration

BI 4.0 Environments



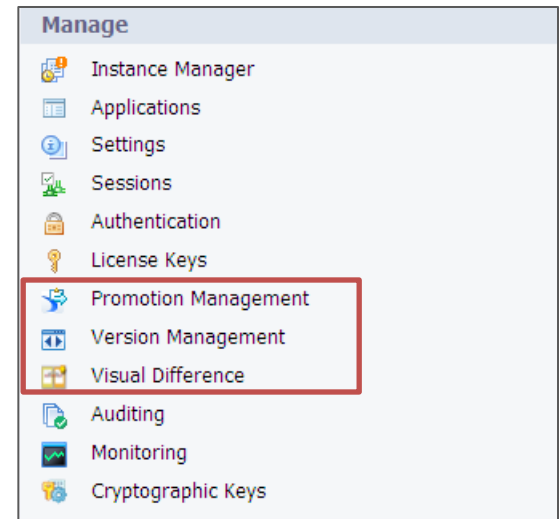
Upgrade Manager

- Replaces Import Wizard
- Two modes
 - Complete
 - Incremental
- Object Instances exported by default – change via Options setting
- BIAR file input/output support
- Performance Considerations
 - Memory allocation – Java Heap size – set to 2 gig by default ... can be changed (8 below)
 - Temp space – use of Windows temp directory by default ... can be changed (F:\Temp below)
 - “C:\BusinessObjects\SAP BusinessObjects Enterprise XI 4.0\win64_x64\jdk\jre\bin\javaw.exe” -Xmx8g -Djava.io.tmpdir=“F:\Temp” -Djava.library.path=“..\..\..\..\win64_x64” -jar upgrademanagementtool.jar
 - Timeout settings
- Set up a .bat file with appropriate parameter settings



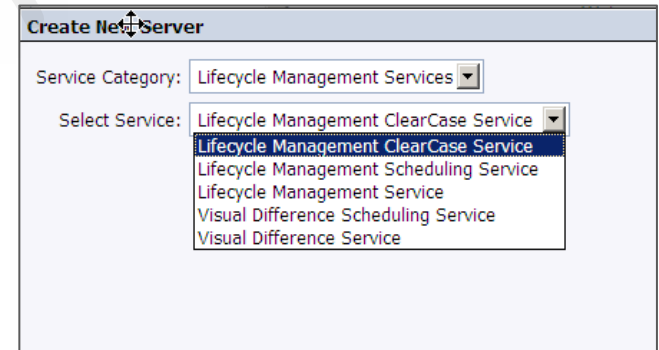
Lifecycle Management in BI 4.0

- Promotion Management
 - Promoting content between 4.0 systems
- Version Management
 - Maintain multiple object versions and rollback capabilities
- Visual Difference
 - View differences between objects
- Fully integrated in BI 4.0 Platform
 - Monitoring of LCM services
 - Auditing LCM system changes
 - Localized
 - CTS+ Integration



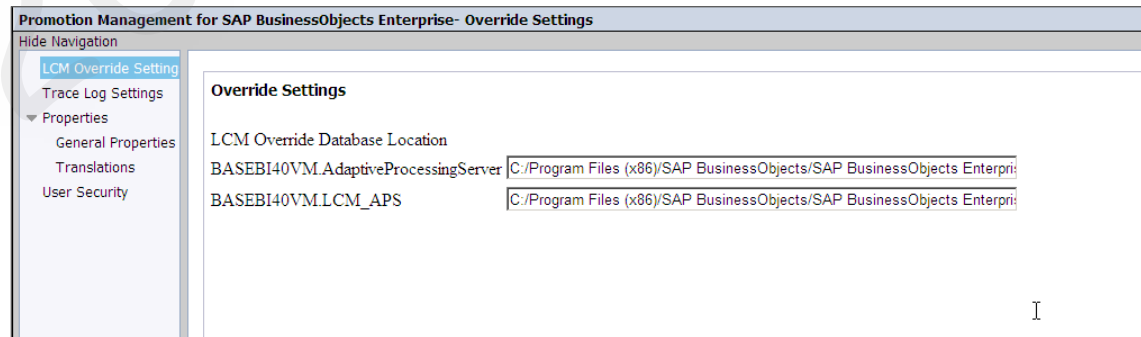
Setting Dedicated LCM Server(s)

- 5 'Services' required for LCM
 - Adaptive Processing Server
 - Lifecycle Management ClearCase Service (LCMClearCaseServiceOCCA2)
 - Lifecycle Management Service (LCMServiceOCCA2)
 - Visual Difference Service (VisualDiffService)
 - Adaptive Job Server
 - Lifecycle Management Scheduling Service (LCMSchedulingService)
 - Visual Difference Scheduling Service (VisualDiffJavaSchedulingService)
- ClearCase service seems necessary even when using Subversion
- Capture dedicated LCM_APS and LCM_Job Servers

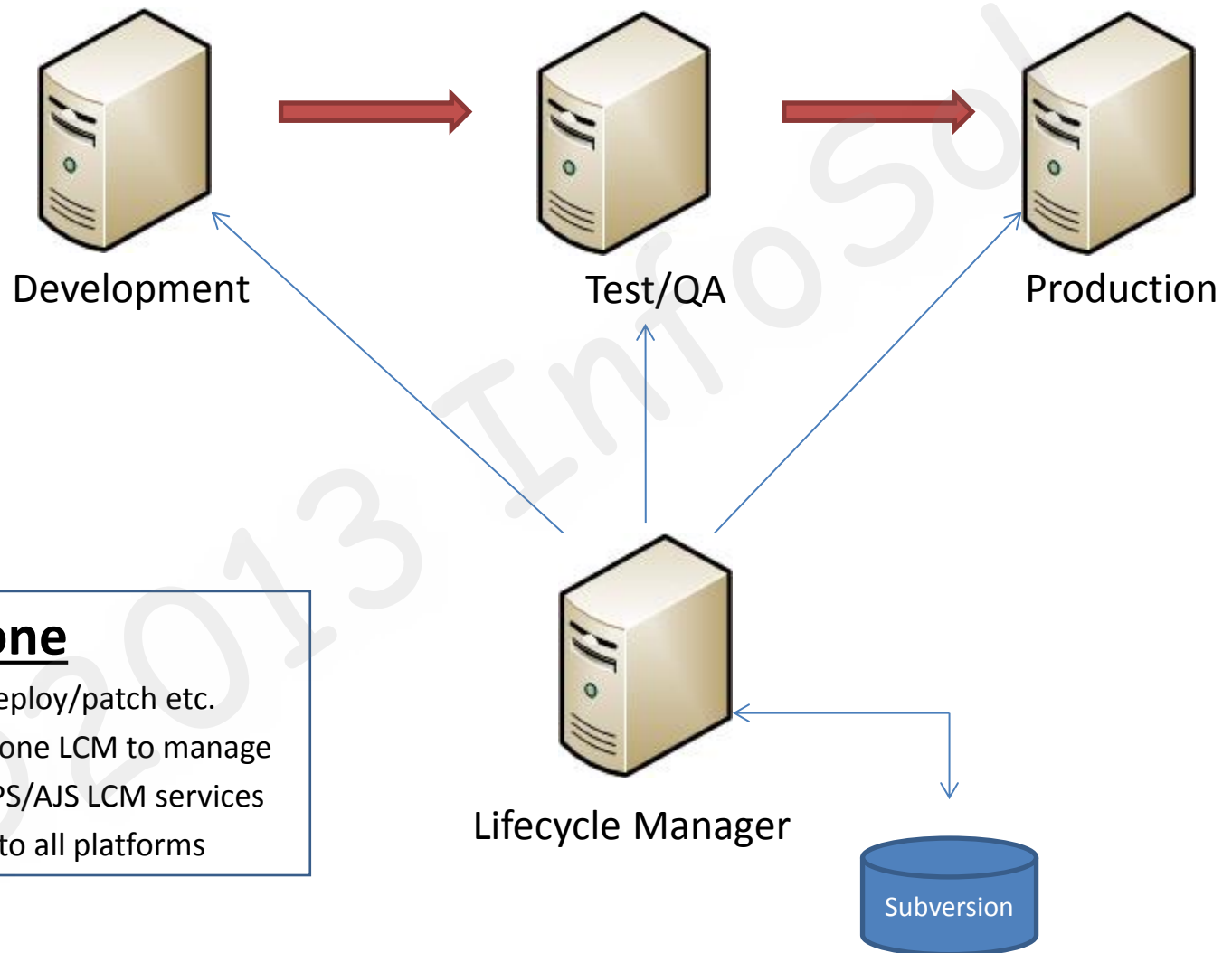


Application Settings - LCM Server(s)

- Promotion Manager
 - Override Location
 - Adaptive Job Server
 - Lifecycle Management Scheduling Service (LCMSchedulingService)
 - Visual Difference Scheduling Service VisualDiffJavaSchedulingService)
- ClearCase service seems necessary even when using Subversion
- Capture dedicated LCM_APS (1) and LCM_AJS Servers
 - Previous section on APS/AJS Deployment/Sizing



LCM – Standalone Deployment

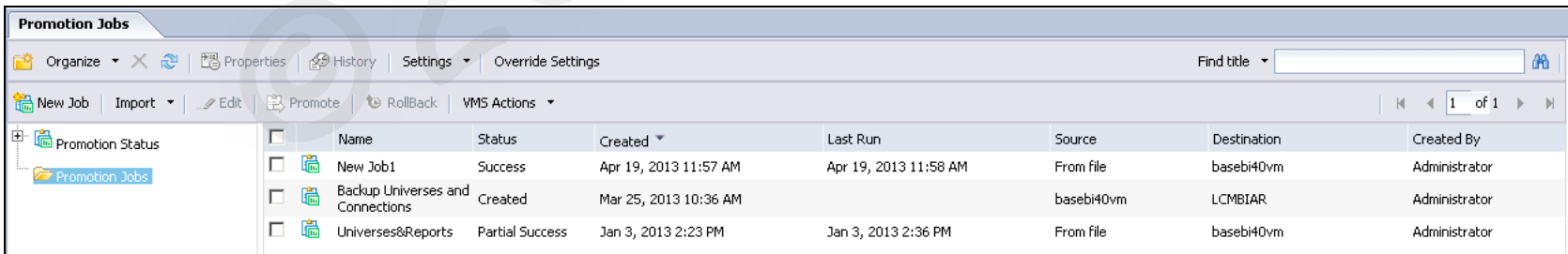


LCM Standalone

- Additional server to deploy/patch etc.
- Reduced complexity - one LCM to manage
- Requires CMC, FRS, APS/AJS LCM services
- Network connectivity to all platforms

Promoting Content – Promotion Manager

- Content Promotion
 - Run Now/Recurring Schedules
 - Create Folders to help manage Promotion Jobs
 - Managing Settings – Networked Systems
 - Managing Overrides Policy
 - Instance Management
- Managing Dependencies
 - Universes, Connections, Access Levels, Events, Calendars etc.
- Not a Backup Strategy
 - Limit to approximately 100 Objects
- Test Promotion Option
- Rollback Option
 - Restore system to previous state (Production)
 - Avoid rolling back more than 1 version



The screenshot shows the 'Promotion Jobs' window in a software application. The window has a menu bar with 'Organize', 'Properties', 'History', 'Settings', and 'Override Settings'. Below the menu bar is a toolbar with 'New Job', 'Import', 'Edit', 'Promote', 'RollBack', and 'VMS Actions'. A search box labeled 'Find title' is on the right. The main area contains a table with the following data:

	Name	Status	Created	Last Run	Source	Destination	Created By
<input type="checkbox"/>	New Job1	Success	Apr 19, 2013 11:57 AM	Apr 19, 2013 11:58 AM	From file	basebi40vm	Administrator
<input type="checkbox"/>	Backup Universes and Connections	Created	Mar 25, 2013 10:36 AM		basebi40vm	LCMBIAR	Administrator
<input type="checkbox"/>	Universes&Reports	Partial Success	Jan 3, 2013 2:23 PM	Jan 3, 2013 2:36 PM	From file	basebi40vm	Administrator

Version Control – Version Manager

- Version Control
 - Managing different states of the same objects
 - Managed within file-based subversion database repository (default)
 - Multiple Environments can share the same repository
 - ClearCase also an Option as the Version Control repository
 - Lock down access to Version Control file repositories
 - Manage Version Control system as part of Back Ups
 - Understand the full scope of LCM Repositories
 - LCM_Repository
 - LCM_Overrides
 - LCM_Checkin

Visual Difference

- Visual Difference
 - Review differences between Objects
 - Not Comprehensive
 - Can be used
 - Source to Destination BI 4.0 Systems
 - LCMBIAR against LCMBIAR/Source/Destination
 - Version Management against Source/Destination/LCMBIAR
 - Can look for Similarities, Differences or Both

Working with LCM

- Product Immaturity
- Unreliable
 - Not robust
 - Small loads only
 - Sometimes just does not import/export objects
- Hard to use
 - Which is the system of record?
 - Not scalable – have to manage deployment on distributed systems
 - More difficult to manage interim backups using BIAR (LCMBIAR – no selective restore)
 - No significant improvements with BI 4.1
 - Some vague promises for service pack enhancements
- Research other products for content promotion and version control

Demonstration

